

HomestayNews

November 2023 • Lest we forget



November is a time to take pause and remember. Remembrance Day ceremonies are great conversation tools with students. They have different historical dates and days of observation from past wars and conflicts as well. It is a great time for everyone to listen and learn something new about each other's culture and history.

Other Students / Adults / Visitors Living in Your Home

A reminder that if you have other students (college students or students you are hosting through a private homestay arrangement), adults, or extended visitors staying in your home, we need to be made aware. If they are over 18 years of age, we will require a Vulnerable Sector Criminal Record Check. Please contact your Homestay Coordinator for changes and updates to your Homestay Composition / Profile.

Financial Planning with Natasha

Homestay parent Natasha Dean works in the Financial Planning industry and is happy to speak to anyone looking for different investment, retirement, life insurance, or wealth management advice and support. She provided a nice write-up about her business. It is located on page 3 of this Newsletter. We will also be adding the information to our [Homestay Website -Homestay Family Small Businesses in Our Community](#).

Conversation Starter Topic:
What was your favourite game to play as a child?

Study Insured Virtual Care Account Creation

At registration, students received their Study Insured information (booklet and policy number). If they have misplaced that, please ask them to reach out to us as we can only give policy numbers to students.

Getting ahead of things, it is a very smart idea to have students create their virtual health care account now. They start by going to the [Study Insured Delta ISP Dashboard](#). At the top, there is a link that states, [Need to see a Doctor? Click Here](#). Student enter there and Sign Up for their account. It is similar to any secure account creation. It is case sensitive. The policy number will have uppercase letters in it. There will be 2-step verification (text and email) as well as personal information required. Students should use their **PERSONAL EMAIL** and not their @deltalearns.ca email for this one. It will ensure they have access to records after returning home. Cut and Paste doesn't work for the registration. They should type it in.

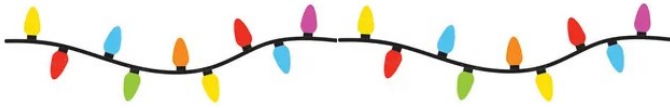
Once students have created their account, it will be very simple to log in and request a virtual appointment when they are feeling sick. A tip we were provided by Study Insured is that the description of symptoms section needs to be at least 25 characters. Still a small amount but simple statements work best - *"I feel sick. Sore throat and stuffy nose."*

We feel this is a much better approach than having students, and their host parents, try to create the account while everyone is under the weather. If you get stuck in the account creation process, please call the Study Insured line for trouble shooting. 1-866-883-9787.

Students with Study Permits MUST bring them to the hospital / ER when they go. It changes the bill

Delta ISP December Activities - Holiday Lights at VanDusen Garden and Whistler Schools on Snow Ski / Snowboard Trip

We have two activities again in December. The first activity is our trip on December 11th to VanDusen Garden to take in their Winter Holiday Lights. Students can sign up and pay for the trip starting November 15th.



Later that week, on Wednesday, December 13th, we will be going on our ski trip to Whistler. Their Schools on Snow program has made it more restrictive this season in terms of dates that can accommodate a group as large as ours. The other dates in January were going to conflict with student exams and departure dates of the first semester students.

Students will receive information about both activities through email, their International Coordinator's Google Classroom, and posters displayed in their International Coordinator's space at school.

Whistler Trip Sign-Up

The sign-up for the Whistler Schools on Snow trip will be slightly different than the other sign-ups. On sign-up day, students will email Brent as soon as he posts instruction to do so. No need for immediate payment.

Brent will then create the list of participants and then send out the payment link, Google Form Rental Information link, and Natural Parent Ski Waiver Form that students must complete before an assigned due date. After that date, students on the waiting list will be invited to complete the information and other students removed from the trip list.

Concerts, Ticketed Parties, and Sporting Events Outside Delta

Another quick reminder that students are not permitted to go to evening (ending after dark) concerts or sporting events in downtown Vancouver on their own. They can go to daytime events or to evening events with an approved adult aged 25+.

Travel

Contact [Brent](#) so we can get the documentation and permission in place before your trip!

Please let us know early about travel plans. Driving to the US requires an [ESTA](#) and [I-94 form](#). Not all nationalities can visit the US freely. We will prepare a travel letter to the US, even for day trips, with your international student.

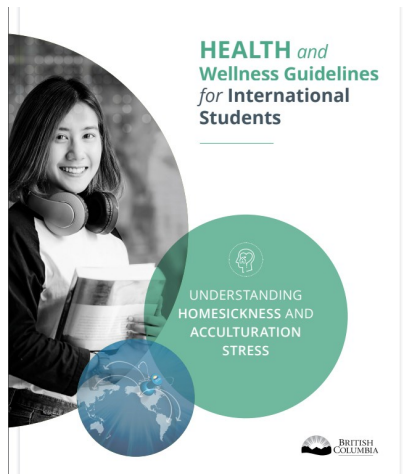
If you are planning a day trip, please let us know. The same documentation is not required if staying in Canada, but because Karen Symonds, the Program Director, is the custodian for the majority of our students, we do need to know where they are travelling to outside of the Lower Mainland. It allows us to stay in the loop and be ready to assist if the need arises.

Acculturation Stress

It is the time of year again when September arrival students are starting to show signs of acculturation stress.

The weather is getting gloomier and there are much fewer daylight hours to enjoy.

Students experiencing acculturation stress (another term for culture shock) and going through a heavy distress phase in the acculturation process is something we are currently seeing a rise in. This does not mean every student will experience things the same way, just that a few are struggling more than their peers.



Follow the link to the [Health and Wellness for International Students document](#) created by the Provincial Government. It provides information and resources to assist students as they go through this journey. It will be different for everyone, but there is great information in those pages.

We all want the best experiences possible for the international students that choose Delta School District for their study abroad experience.

Helping them through this rough phase is an important step in setting them up for success during their remaining time with us and with future adventures they may experience in their lives.

Please reach out if you have questions or concerns. Working as a team to assist students who are struggling is always a good idea.

A Message from Natasha Dean - Financial Planner

Hello my homestay families. I am honored to be hosted in the November Delta School District newsletter. My name is Natasha Dean and I am a licensed financial professional specializing in building generational wealth for families. I'm obsessed with elevating our communities financial IQ through financial education and empower individuals and families to make solid financial decisions for their future while protecting their loved ones.

I specialize in debt management, wealth generation, retirement and savings strategies, children wealth planning, estate planning and more.

Please feel free to contact me (778-886-4215) for a complementary consultation

Ski Friends

We have heard from a few students looking for ski buddies. We will be trying to connect them so they can enjoy some skiing together on the North Shore mountains this winter. The students looking for ski buddies are typically higher level / ability skiers.

The friends those students have made are also interested in skiing, but are less experienced or not experienced at all. If your student is an avid skier and is looking for people to go to the mountain with this winter, please reach out to your Homestay Coordinator and we can try to connect them. There is a good section in the Homestay Handbook with wording around ski daytrips for students.

Study Insured

When you visit the [Study Insured website linked to our Delta School District website](#), you are presented with numerous forms on the left-hand side of the page.

The Claim Form - Medical is something we are working with Study Insured on. The reimbursement section only provides the option of cheque or bank transfer (to a Canadian bank). For students here for less than a full school year, this could present challenges.

We will update you once there is a revision to the form to assist our short-term students.

Host parents should not be paying for clinic / doctor visits. Hospital visits should mean an invoice is mailed to our office. Use the 4585 Harvest Drive, Delta BC, V4B 5K4 address for intake forms at the Emergency Room.

Homestay Referral Gift Card

We are still actively recruiting more homestay families. If you refer a family who completes the application process and is able to host a student, you will receive a \$100 referral incentive gift card.

MSP for Full Year Students

Students enrolled with Delta School District for the full school year, or longer, will be on MSP once they have been BC Residents for 3 consecutive calendar months (not 90 days).

Most students arrived here in August. That means their MSP coverage will start from November 1st. Students who arrived on September 1st or later will have to wait until December 1st for their MSP to be active.

Students might need to see a doctor before they receive their BC Services Card. If they need their Personal Health Number (PHN), please have them reach out to one of our staff members. We can share it directly with them.

These students still have Study Insured Insurance. It will act as their “top-up” insurance once their MSP is active.

Homestay Handbook

We have uploaded a working version of our [Homestay Handbook](#). We are continuing to make adjustments and edits to it. Please review it on our website and reach out to your Homestay Coordinator if you have any questions.

Karen Symonds – Delta School District International Programs Director

Office: 604-952-5372 ♦ Cell: 604-396-6862 ♦ KSymonds@GoDelta.ca

Our dedicated team of Homestay Coordinators are here to support you. Feel free to reach out to them.

Teri Gallant (Ladner) ♦ Ph: 604-952-5399 ♦ TGallant@GoDelta.ca

Gillian Patrick (Tsawwassen) ♦ Ph: 604-952-5385 ♦ GPatrick@GoDelta.ca

Michele Ramsden (Seaquam, Burnsvew, and feeder schools) ♦ Ph: 604-952-5352 ♦ MRamsden@GoDelta.ca

Tania Hope (North Delta, Delview, Sands and feeder schools) ♦ Ph: 604-952-5396 ♦ THope@GoDelta.ca

Brent Gibson - Homestay Manager International Programs

Office: 604-952-5075 ♦ Cell: 604-319-0493

BGibson@GoDelta.ca

